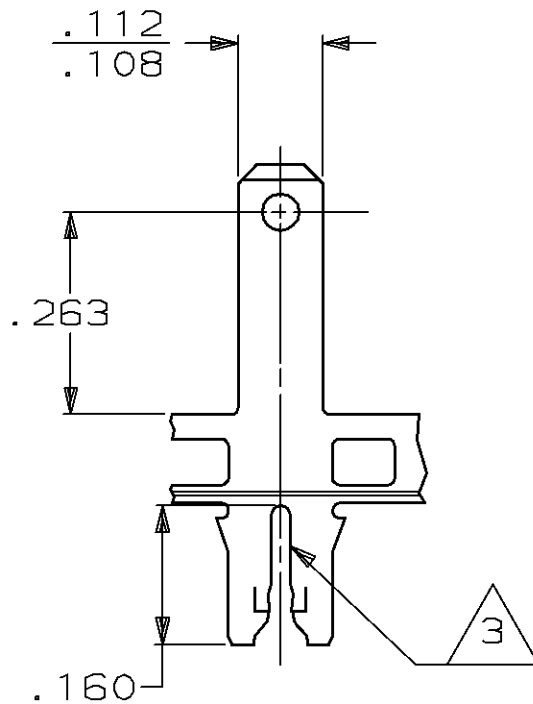
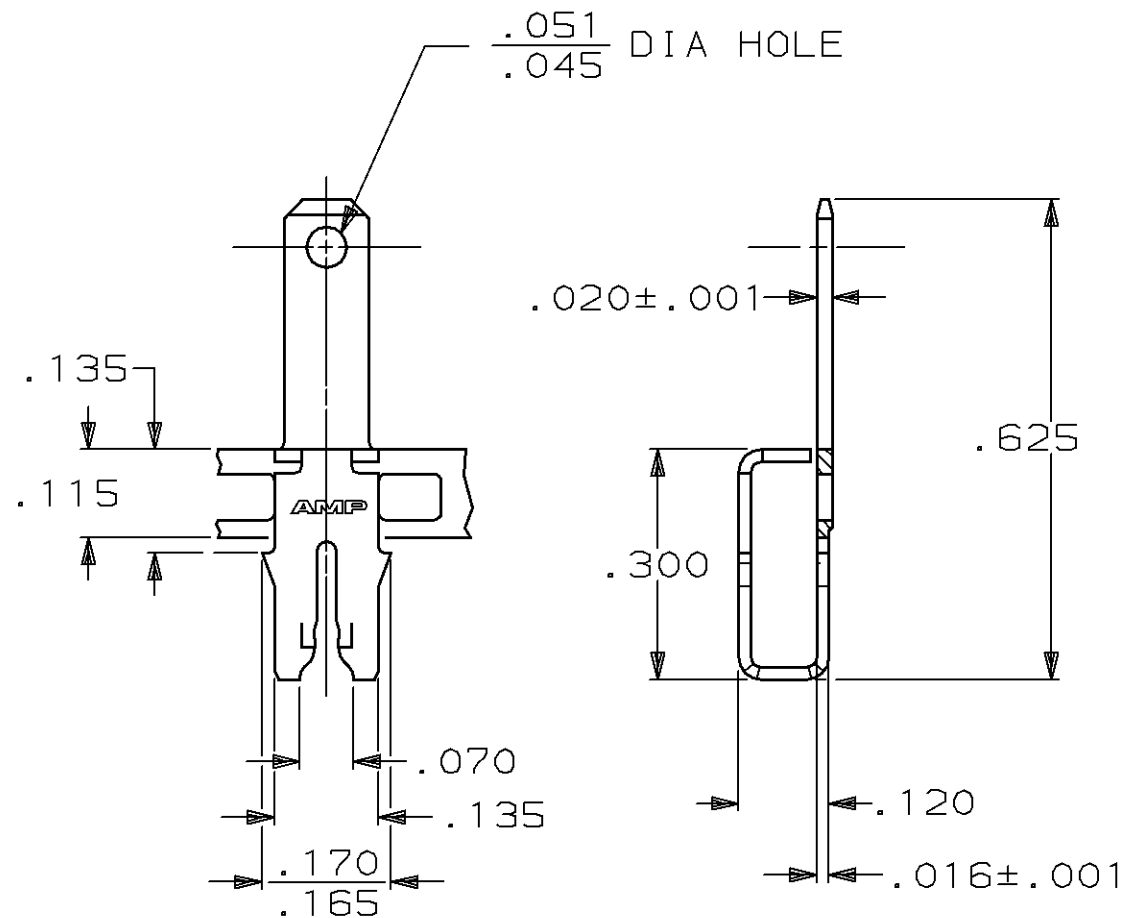
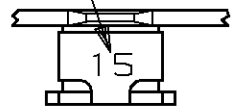


THIS DRAWING IS UNPUBLISHED. RELEASED FOR PUBLICATION ,19 .
 © COPYRIGHT 19 BY AMP INCORPORATED, HARRISBURG, PA. ALL INTERNATIONAL RIGHTS RESERVED. AMP PRODUCTS MAY BE COVERED BY U.S. AND FOREIGN PATENTS AND/OR PATENTS PENDING.

LOC	DIST	P	F	ZONE	LTR	DESCRIPTION	DATE	APPROVED
AF	50				A	RELEASED PER F.A.S.R.	5/11/89	MSF

IDENTIFICATION NUMBER 15 FOR MAGNET WIRE RANGE.



- 1 MAG-MATE CAVITY SPECIFICATION.
- 2 CONTINUOUS STRIP ON REELS WITH TERMINALS LOCATED ON ON .220 CENTERS.
- 3 SLOT ACCEPTS #23-#20 COPPER MAGNET WIRE.
- 4 AFTER INSERTION INTO PLASTIC HOLDER TAB PORTION MUST BE BENT OVER 45° TO 90° OR POTTED TO PREVENT PULL-OUT WHEN MATING RECEPTACLE IS DISCONNECTED.

63486-1

PART NO

UNLESS OTHERWISE SPECIFIED DIMENSIONS ARE IN INCHES TOLERANCES ON:
 2 PL DEC ± -
 3 PL DEC ± .010
 ANGLES ± 1°

MATERIAL #4 HARD PRE-MILLED BRASS

FINISH TIN

DR M.S. FEHER 2/23/89

CHK JR RUTH 2/24/89

APPD NELSON E. NEFF 3/7/89

APPD C.G. ATHERTON 3/9/89

PRODUCT SPEC -

APPLICATION SPEC 114-2046 1

WEIGHT -

AMP AMP INCORPORATED Harrisburg, Pa. 17105

NAME TAB, 110 FASTON, MAG-MATE™

SIZE **B** FSCM NO 00779

DRAWING NO 63486

SCALE 4:1

SHEET 1 OF 1